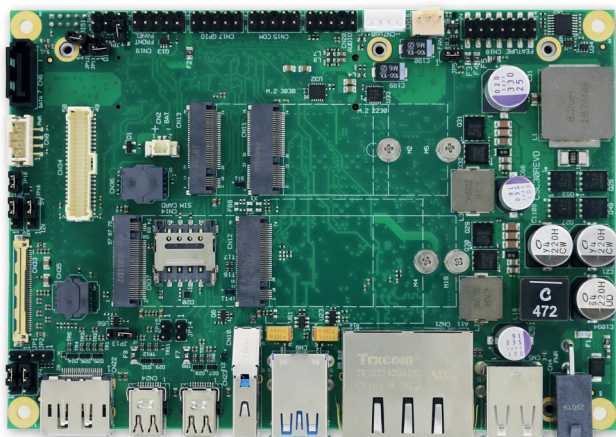




CCOMe-C30

Carrier Board for COM Express® Type 6 Modules on 3.5" form factor

Most compact, I/O-rich COM Express® Type 6 carrier board



HIGHLIGHTS

- Specifically designed for digital signage
- Broad variety of connectivity possibilities in the compact 3.5" form factor
- Multi-display support
- Ultimate versatility



FEATURES

Video Interfaces	1 x DP++ connector 2 x miniDP++ connectors LVDS 24-bit Single/Dual Channel LVDS External EDID flash socket eDP 4-lanes 40 poles VESA connector	Other Interfaces	microSIM slot for M.2 modem 4 x GPI + 4 x GPO pin header (interface multiplexed with μ SD slot) Button / LEDs front panel header 3-pin tachometric FAN connector I2C + SM Bus on feature Pin header LPC internal header
Mass Storage	S-ATA 7p M connector + 4 pins power connector M.2 Socket 2 2260 Key B slot for SSD M.2 Socket 3 2280 Key M slot for PCI-e x4 SSDs μ SD Card slot (interface multiplexed with GPIO header)	Power Supply	19 \pm 24 V _{DC} (only CPU modules with max 45W TDP supported) Mega-Fit® 2x1 Power Connector Cabled Coin-cell connector for RTC
Networking	Dual RJ-45 connector (1 port managed by COM Express Gigabit Ethernet interface, 1 port managed by Carrier board's Intel® I21x GbEthernet controller) M.2 Socket 2 2242 / 3042 Key B slot for WWAN modules (modem) M.2 Socket 1 2230 Key E slot for WiFi / BT modules	Operating Temperature*	0°C \div +50°C
USB	3 x USB 3.0 Host ports on Type-A sockets 2 x USB 2.0 Host ports on Type-A sockets 1 x USB 2.0 Host port on internal pin header	Dimensions	146x102mm (3.5" form factor, 5.75" x 4.02")
Audio	On-board HD Audio Codec (Realtek ALC262) Mic In + Line Out internal pin header	*All carrier board components must remain within the operating temperature at any and all times, including start-up; carrier operating temperature is independent of the module installed. Please refer to the specific module for more details. Actual temperature will widely depend on application, enclosure and/or environment. Upon customer to consider specific cooling solutions for the final system.	
Serial Ports	2 x RS-232 / RS-422 / RS-485 ports on internal pin header (from carrier board's SuperI/O) 2 x RS-232 ports on feature pin header (from module)		

CCOMe-C30

Carrier Board for COM Express® Type 6 Modules on 3.5" form factor

BLOCK DIAGRAM

